

Z50 EXP
Diagnostic Ultrasound System



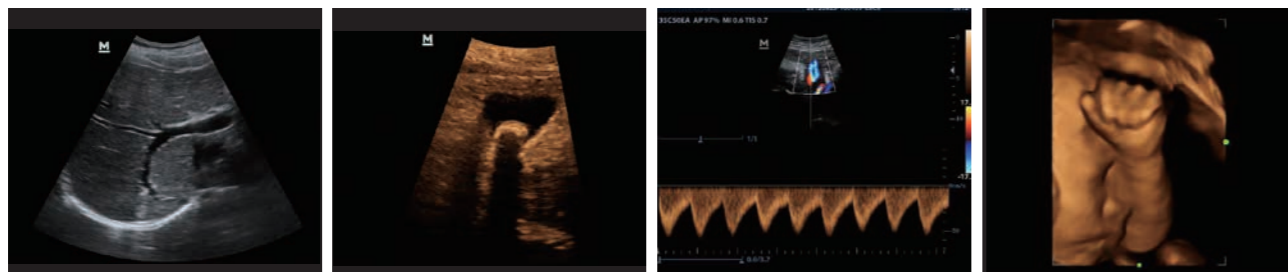
With the ultimate combination of high performance, comprehensive clinical applications, and integrated design, the Z50 EXP will help you respond more rapidly and effectively in primary healthcare. Switching from a Black & White system to a highly efficient Color Doppler system has now been made easier and simpler than ever before, making it possible to reach beyond boundaries and transcend the ordinary when it comes to patient care.

Wide range of application packages

- **Scanning modes:** B, Color, PW, Power, M
- **Transducer variety:** Convex, Linear, Micro-convex, Endocavity, 4D volume
- **Applications:** ABD/OB/GYN/SML/URO/VAS/ORTH/MSK/NERVE and more

Application tools for simplicity and productivity

- **3D/4D imaging**
- **iLive:** Realistic view of the fetus with human skin-like images
- **Smart Face:** Intelligently remove obstacles and eliminate noise for fetal face
- **Smart OB:** Accurate auto measurements for fetal parameters
- **Auto IMT package:** Automatic measurement for Intima-Media Thickness
- **iScape™ View:** Realtime panoramic imaging



liver

Gallbladder Stone

PW of Umbilical Artery

3D of Fetal face

Streamlined workflow for high efficiency

- **iTouch:** Quick image optimization with one-click
- **iZoom:** Instant full screen zoom with one-click
- **iStation:** Patient database review and analysis platform
- **iStorage:** Direct data transfer to PC
- **Multiple image formats :** BMP, JPG, DCM, AVI, DCM, CIN

Experience with high mobility

- Integrated design with internal AC power adapter
- 15 inch full screen design
- 60 degree tilting angle adjustable monitor
- Max 3 universal transducer connectors
- 500GB hard disk for large patient data storage
- 1.5h duration time with rechargeable battery
- Can be packed in a convenient hand-carry bag for easy transportation



15 inch Full Screen design



60 degree tilting angle adjustable monitor



Max 3 universal transducer connectors



Hand-carried bag

